

QPL QUALIFIED

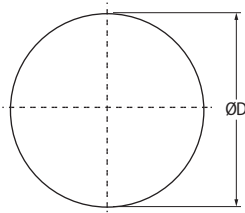
# MIL-DTL-38999 Series III, Triple-Start Thread

## D38999/25 solder mount hermetic receptacle

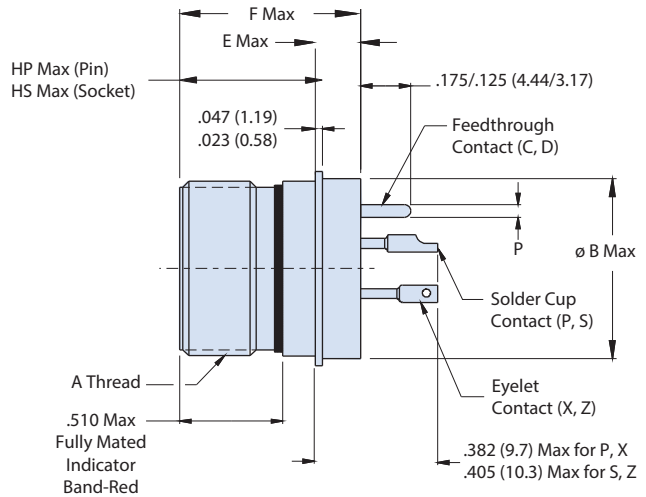
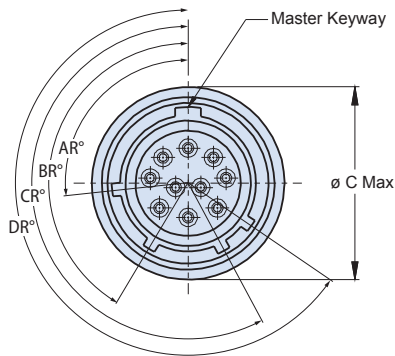


SERIES III HERMETIC

QPL Part Number Development						
Sample Part Number	D38999/25		Y	B	35	P N
MIL-DTL-38999	D38999/25 = Solder mount receptacle					
Class	N = Hermetic, CRES, nickel finish, conductive, -65°C to 200°C Y = Hermetic, CRES, passivate finish, conductive, -65°C to 200°C H = Hermetic, CRES, passivate finish, conductive, -65°C to 200°C (space grade)					
Shell Size Code	A, B, C, D, E, F, G, H and J (per MIL-STD-1560)					
Insert Arrangement	Per MIL-STD-1560; See reference information section for details					
Contact Type	P = Pin, solder cup		X = Pin, eyelet		C = Pin, PCB flex feedthrough	
	S = Socket, solder cup		Z = Socket, eyelet		D = Socket, PCB flex feedthrough	
Alternate Polarization	A, B, C, D, E, N (Normal)					



Recommended Panel Cutout



Series III Alternate Keyway Polarizations																				
Shell Size Code	Shell Size	Key and Keyway ID Letter	AR° BSC	BR° BSC	CR° BSC	DR° BSC	Shell Size Code	Shell Size	Key and Keyway Code	AR° BSC	BR° BSC	CR° BSC	DR° BSC	Shell Size Code	Shell Size	Key and Keyway ID Letter	AR° BSC	BR° BSC	CR° BSC	DR° BSC
A	9	N	105	140	215	265	B C D	11 13 15	N	95	141	208	236	E F G H J	17 19 21 23 25	N	80	142	196	293
		A	102	132	248	320			A	135	170	200	310							
		B	80	118	230	312			B	49	169	200	244							
		C	35	140	205	275			C	66	140	200	257							
		D	64	155	234	304			D	62	145	180	280							
		E	91	131	197	240			E	79	153	197	272							