

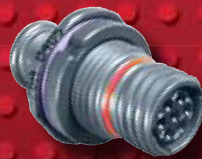


**Glenair®**

# Series 80 Mighty Mouse Connectors & Cables

*The Shielded Environmental Connector with  
Mil-Spec Performance and Ultraminiature*

United States ■ United Kingdom ■ Germany ■ France ■ Nordic



✓  
**In  
Stock!**

- 43 Insert Arrangements
- Six Shell Styles
- From One to 130 Crimp/PCB Contacts
- Point-to-Point Cordsets

**SERIES 80**

# MIGHTY MOUSE

- ◆ **Up To 71% Weight Savings and 52% Size Savings Compared to MIL-DTL-38999**
- ◆ **The World's Best Availability—Thousands of Part Numbers In Stock and Ready for Immediate Same-Day Shipment**



Series 801  
Mighty Mouse  
7 Contacts



MIL-DTL-38999  
6 Contacts





# Series 805 Mighty Mouse Triple-Start Threaded Coupling Introduction



Series 805

## SECTION C SERIES 805 TRIPLE-START PRODUCT SELECTION GUIDE

### Plugs

Page H-6

805-001, 805-002



### Series 805 Plugs

These connectors are supplied with a full complement of contacts for termination to insulated wire. The integral shield termination platform accepts **BAND-IT**® stainless steel bands (ordered separately), or select connectors with accessory threads for use with a variety of strain relief options. Contacts are crimp-type, and are packaged with the connector.

### Crimp Receptacles

Page H-8

805-003, 805-004



### Series 805 Receptacles for Insulated Wire

Jam nut for rear panel mounting, square flange and in-line versions make it easy to find a style for every application. The integral shield termination platform accepts **BAND-IT**® stainless steel bands (ordered separately), or select connectors with accessory threads for use with a variety of strain relief options. Contacts are crimp-type, and are packaged with the connector.

### Solder Cup/PCB Receptacles

Page H-12

805-005, 805-017



### Series 805 Receptacles With Solder Cup or PCB Termination

These panel mount connectors feature gold plated, factory-installed non-removeable contacts. Choose printed circuit terminals for attachment to flex circuits or rigid boards, or choose solder cup contacts. Connectors are potted with epoxy for general purpose applications, or choose silicone-sealed, leak-tested versions for 1 meter water immersion.

### Hermetic Receptacles

Page H-15

800-032



### Series 805 Hermetic Receptacles

Need a hermetic for a sealed box or instrument? These stainless steel, glass-sealed connectors are available with solder cup or PC tail contacts. Choose jam nut, square flange or solder mount versions. Contacts are gold plated iron alloy. 100% tested to meet  $1 \times 10^{-6}$  cc/sec helium leakage. Open face pressure rating 1000 PSI.

### Sav-Con®

Page H-19

805-010



### Series 805 Sav-Con® Connector Savers

Protect expensive test equipment and cables with Glenair Sav-Con® connector savers. These plug/receptacle adapters feature non-removable contacts and a ratcheting coupling mechanism to prevent loosening under vibration.

### Cordsets

Page H-21

800-034, 800-041,  
800-038, 800-039



### Series 805 Cordsets

Specify overmolded cordsets for optimum convenience and performance. Polyurethane jackets provide excellent all-weather cable protection. Fully shielded, with watertight overmolding.

### Protective Covers

Page H-25

667-261, 667-262



### Series 805 Protective Covers

Thread-on metal covers provide a watertight seal and prevent damage. Select nylon cord or wire rope lanyards with a range of ring terminal diameters to fit just about any need.

Dimensions in inches (millimeters) and are subject to change without notice.

CAGE Code 06324

Printed in U.S.A.

© 2010 Glenair, Inc.

GLENAIR, INC. • 1211 AIR WAY • GLENDALE, CA 91201-2497 • 818-247-6000 • FAX 818-500-9912

www.glenair.com

H-1

E-Mail: sales@glenair.com

13 - FEBRUARY - 2013

H



Series 805 Mighty Mouse Triple-Start  
PCB or Solder Cup Receptacle Ordering Information  
805-005 and 805-017



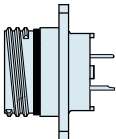
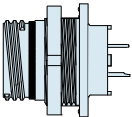
Series 805 Jam Nut  
PCB Receptacle Connector

**Printed Circuit Board/ Solder Cup Receptacles** feature low profile shells for minimum protrusion inside enclosures and integral standoffs for board washout. Contacts are non-removable.

**Water Immersion, Unmated**

Specify **805-005** connectors for applications where open face water immersion is not a requirement. For MIL-STD-810 Method 512G immersion requirements, specify **805-017** watertight connectors. These 805-017 connectors are specially sealed ("MOD-518") and are 100% tested to maintain a helium leak rate of 1 x 10<sup>-4</sup> cc/second at one atmosphere pressure differential from -40C to +70C.

HOW TO ORDER

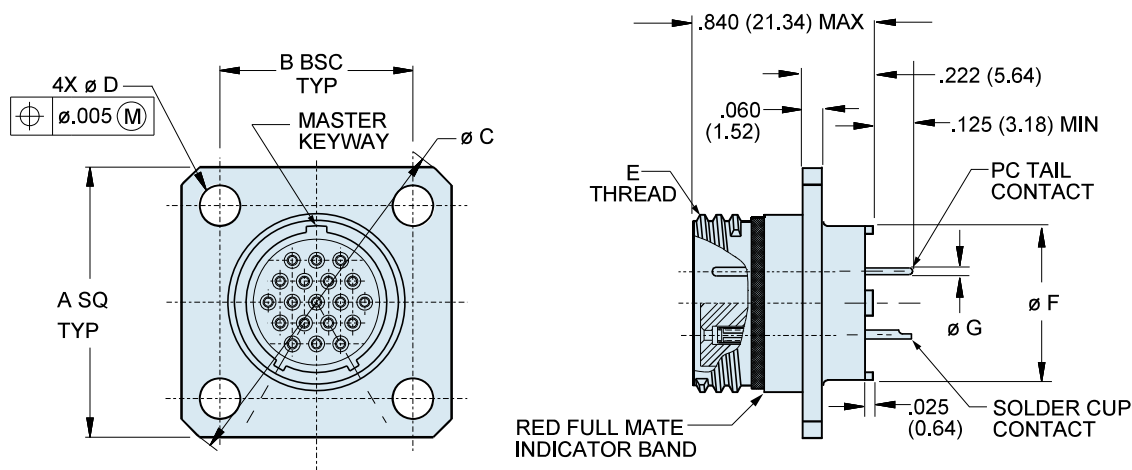
Sample Part Number					
805-005	-07	M	10-13	P	B
Series	Shell Style	Shell Material / Finish	Shell Size- Insert Arrangement	Contact Type	Shell Key Position
<b>805-005</b> Receptacle for Solder Cup or PCB Termination, with Standard Epoxy Potting  <b>805-017</b> Receptacle for Solder Cup or PCB Termination, With Special "MOD-518" Sealing For Open Face (unmated) Water Immersion Requirements. 100% Leak Tested.	 <b>-02</b> Square Flange Front or Rear Mount	<b>C</b> Aluminum / Black Anodize (Non-Conductive) RoHS Compliant	SEE <b>CONTACT ARRANGEMENTS</b> PAGE H-2	<b>P</b> Pin, PC Tail	<b>A</b> Position A (Normal)
	<b>-07</b> Square Flange Front or Rear Mount	<b>M</b> Aluminum / Electroless Nickel RoHS Compliant		<b>S</b> Socket, PC Tail	<b>B</b> Position B
	<b>-12</b> Square Flange Rear Mount Non-Locking Clinch Nuts	<b>MT</b> Aluminum / Nickel-PTFE RoHS Compliant		<b>E</b> Pin, Solder Cup	<b>C</b> Position C
	<b>-22</b> Square Flange Rear Mount Locking Clinch Nuts	<b>NF</b> Aluminum / Cadmium with Olive Drab Chromate		<b>F</b> Socket, Solder Cup	<b>D</b> Position D
	 <b>-07</b> Jam Nut Rear Mount	<b>ZN</b> Aluminum / Zinc-Nickel with Olive Drab Chromate			
		<b>ZNU</b> Aluminum / Zinc-Nickel with Black Chromate			

# Series 805 Mighty Mouse Triple-Start PC Tail and Solder Cup Square Flange Receptacle

805-005-02, 805-017-02



Series 805



SQUARE FLANGE WITH PC TAIL  
OR SOLDER CUP CONTACTS  
805-005-02  
805-017-02

## DIMENSIONS

Shell Size	A		B		Ø C		Ø D		E Threads	Ø F		Ø G Tail Dia.
	In.	mm.	In.	mm.	In.	mm.	In. ± .003	mm. ± .08		In.	mm.	
8	.850	21.59	.660	16.76	1.150	29.21	.094	2.39	.5000-.1P-.3L-TS-2A	.330	8.38	#23
9	.913	23.19	.723	18.36	1.230	31.24	.094	2.39	.5625-.1P-.3L-TS-2A	.432	10.97	.018/.022 (0.46/0.56)
10	.975	24.77	.785	19.94	1.330	33.78	.094	2.39	.6250-.1P-.3L-TS-2A	.493	12.52	#20
11	1.039	26.39	.848	21.54	1.410	35.81	.094	2.39	.6875-.1P-.3L-TS-2A	.551	14.00	.024/.028 (0.61/0.71)
12	1.099	27.91	.909	23.09	1.500	38.10	.094	2.39	.7500-.1P-.3L-TS-2A	.620	15.78	#16
15	1.288	32.74	1.058	26.87	1.750	44.45	.128	3.25	.9375-.1P-.3L-TS-2A	.703	17.86	.060/.064 (1.52/1.63)
18	1.475	37.47	1.255	31.88	2.000	50.80	.128	3.25	1.1250-.1P-.3L-TS-2A	.863	21.92	#12
19	1.537	71.06	1.327	33.71	2.094	53.19	.128	3.25	1.1875-.1P-.3L-TS-2A	.912	23.16	.092/.096 (2.34/2.44)
23	1.787	45.39	1.570	39.88	2.440	61.98	.128	3.25	1.4375-.1P-.3L-TS-2A	1.162	29.51	

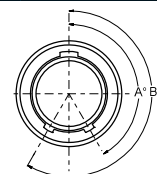
## PERFORMANCE SPECIFICATIONS

DVV	#23 500 VAC Sea level, #20HD 750 VAC, #12 AND #16 1800 VAC
Insulation Resistance	5000 Megohms Minimum
Operating Temperature	-55° C. to +150° C.
Immersion, Mated	MIL-STD-810 Method 512. One Meter for One Hour.
EMI	65 dB Minimum from 1 GHz. to 10 GHz.

## MATERIALS AND FINISHES

Connector Shell	Aluminum or Stainless Steel
Insulator	Liquid Crystal Polymer (LCP)
Seals	Fluorosilicone Rubber, Blue
Contact	Copper Alloy, Gold over Nickel Plating
Contact Retainer Clip	Beryllium Copper, Unplated

## SERIES 805 KEY POSITIONS



Key Position	Key Rotation	
	A	B
Normal (A)	150°	210°
B	75°	210°
C	95°	230°
D	140°	275°

Dimensions in inches (millimeters) and are subject to change without notice.

© 2010 Glenair, Inc.

CAGE Code 06324

Printed in U.S.A.

GLENAIR, INC. • 1211 AIR WAY • GLENDALE, CA 91201-2497 • 818-247-6000 • FAX 818-500-9912

www.glenair.com

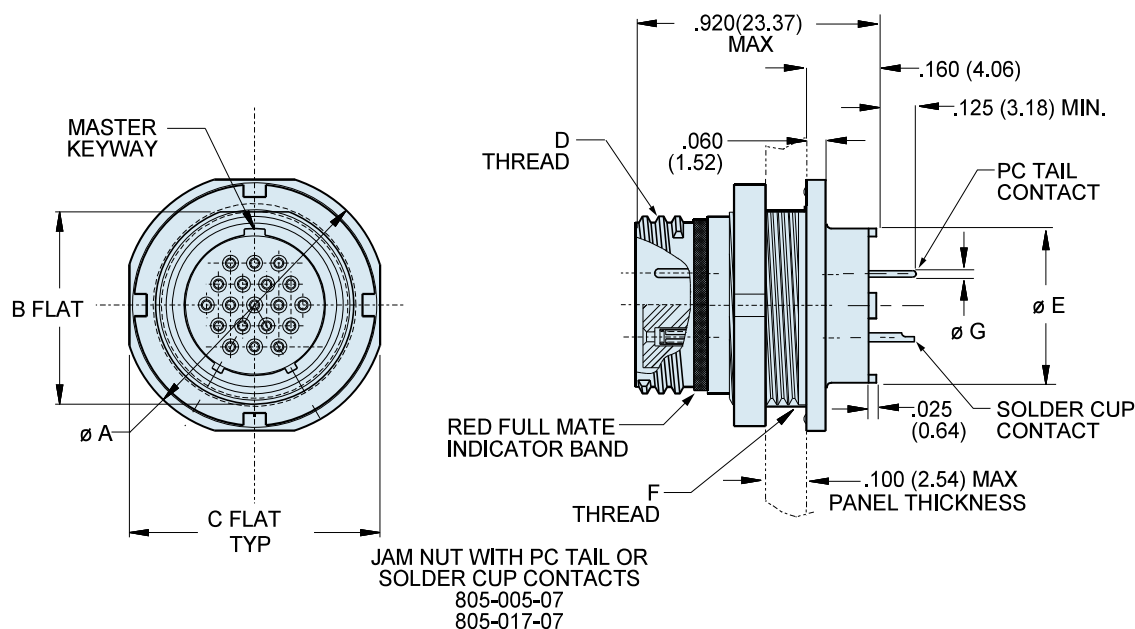
H-13

E-Mail: sales@glenair.com

13 - FEBRUARY - 2013



Series 805 Mighty Mouse Triple-Start  
PC Tail and Solder Cup Jam Nut Receptacle  
805-005-07, 805-017-07



DIMENSIONS

Shell Size	Ø A		B		C		D Threads	Ø E		F Threads	Ø G Tail Dia.
	In.	mm.	In.	mm.	In.	mm.		In.	mm.		
8	.760	19.30	.535	13.59	.730	18.54	.5000-.1P-.3L-TS-2A	.330	8.38	.5625-28 UNEF-2A	#23
9	.880	22.35	.661	16.79	.850	21.59	.5625-.1P-.3L-TS-2A	.432	10.97	.6875-28 UN-2A	.018/.022 (0.46/0.56)
10	.880	22.35	.661	16.79	.850	21.59	.6250-.1P-.3L-TS-2A	.493	12.52	.6875-28 UN-2A	#20
11	.955	24.26	.721	18.31	.925	23.50	.6875-.1P-.3L-TS-2A	.551	14.00	.7500-28 UN-2A	.024/.028 (0.61/0.71)
12	1.060	26.92	.784	19.91	1.035	26.29	.7500-.1P-.3L-TS-2A	.620	15.78	.8125-28 UN-2A	#16
15	1.203	30.56	.970	24.64	1.173	29.79	.9375-.1P-.3L-TS-2A	.703	17.86	1.0000-28 UN-2A	.060/.064 (1.52/1.63)
18	1.389	35.28	1.147	29.13	1.359	34.52	1.1250-.1P-.3L-TS-2A	.863	21.92	1.1875-28 UN-2A	#12
19	1.450	36.83	1.221	31.01	1.420	36.07	1.1875-.1P-.3L-TS-2A	.912	23.16	1.2500-28 UN-2A	.092/.096 (2.34/2.44)
23	1.705	43.31	1.470	37.34	1.675	42.55	1.4375-.1P-.3L-TS-2A	1.162	29.51	1.500-25 UN-2A	

PANEL CUTOUT FOR JAM NUT RECEPTACLE

Shell Size	A Flat		Ø B	
	In. ± .002	mm. ± 0.05	In. ± .005	mm. ± 0.13
8	.543	13.79	.572	14.53
9	.669	16.99	.698	17.73
10	.669	16.99	.698	17.73
11	.729	18.51	.760	19.30
12	.792	20.17	.822	20.88
15	.978	24.84	1.010	25.65
18	1.155	29.34	1.198	30.43
19	1.229	31.22	1.260	32.00
23	1.480	37.59	1.510	38.35

SERIES 805 KEY POSITIONS

Key Position	Key Rotation	
	A	B
Normal (A)	150°	210°
B	75°	210°
C	95°	230°
D	140°	275°